

Contact:  
Eddie Moe  
E: [broker@siamshipoil.com](mailto:broker@siamshipoil.com)  
M: +66 812968224

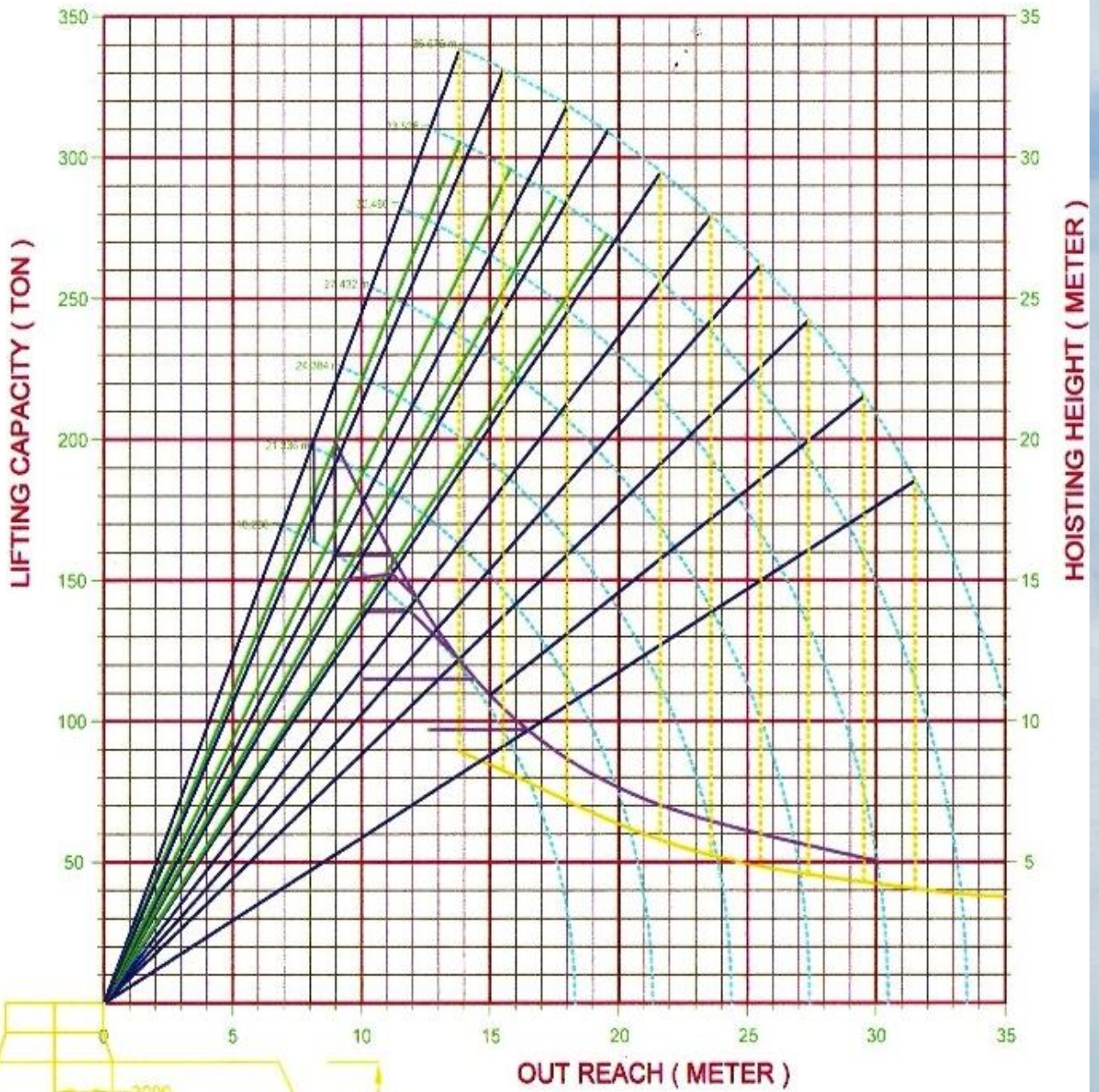


**200MT REVOLVING TYPE  
CRANE BARGE**

## 200mt REVOLVING TYPE FLOATING CRANE SPECIFICATIONS

<b>Flag</b>	<b>Indonesia</b>	
<b>Class</b>	<b>BKI</b>	
<b>Year Built</b>	<b>1999. Japan</b>	
<b>GRT</b>	<b>450</b>	
<b>NRT</b>	<b>135</b>	
<b>Dimension</b>	<b>Length Overall</b>	<b>47.50 M</b>
	<b>Beam</b>	<b>18.00 M</b>
	<b>Depth</b>	<b>3.50 M</b>
	<b>Draft</b>	<b>3.00 M</b>
<b>Crane Description</b>	<b>Crane Model</b>	<b>SF 1700 HD</b>
	<b>Crane Type</b>	<b>Pedestal Crane / Lattice Boom</b>
	<b>Maker</b>	<b>Sumitomo</b>
	<b>Main Boom Length</b>	<b>36.5 M</b>
<b>Main Hoist</b>	<b>Capacity</b>	<b>38.0 Tons (36.5 M Boom)</b>
	<b>Working Radius</b>	<b>32.0 M (36.5 M Boom)</b>
<b>Auxiliary Hoist</b>	<b>Capacity</b>	<b>20 Tons</b>
	<b>Working Radius</b>	<b>26 – 10 M</b>
<b>Mooring</b>	<b>2 point 2 Metric Ton Anchor with 300 m x 32 mm wire</b>	
	<b>2 point 4 Metric Ton Anchor with 300 m x 32 mm wire</b>	
<b>Deck Description</b>	<b>Deck Space</b>	<b>820.8 M</b>
<b>Generators</b>	<b>1 x 300 KVA and 1 x 100 KVA, NIPPON DENSO</b>	
<b>Communications</b>	<b>Marine VHF Walkie Talkies</b>	
<b>Tank Capacities</b>	<b>Water Ballast</b>	<b>262 Tons</b>
	<b>Fresh Water</b>	<b>70 Tons</b>
	<b>Fuel Tank</b>	<b>63.96 Tons</b>
<b>Accommodation</b>	<b>1 x 10 man cabins</b>	





FLOUFT 200	
CRANE CHART	
CRANE	FLOUFT 200
MODEL	350
DATE	
BY	

## **1600 HP PUSHER TUG SPECIFICATIONS**

<b>Flag</b>	<b>Indonesia</b>	
<b>Class</b>	<b>BKI</b>	
<b>GRT</b>	<b>34</b>	
<b>NRT</b>	<b>11</b>	
<b>Year Built</b>	<b>1999, Japan</b>	
<b>Type of Vessel</b>	<b>Pusher Tug Boat</b>	
<b>Ship Builder</b>	<b>TOYO SHIPBUILDING CO., LTD</b>	
<b>Dimension</b>	<b>Length Overall</b>	<b>13.35 M</b>
	<b>Beam</b>	<b>5.60 M</b>
	<b>Depth</b>	<b>2.00 M</b>
	<b>Draft</b>	<b>1.45 M</b>
<b>Main Engines</b>	<b>2 x 800 HP Yanmar Marine Engines</b>	
<b>Others</b>	<b>c/w all navigational &amp; communicational equipment.</b>	

**Particulars are believed to be correct but not guaranteed**